

Crestwood / Glen Cove Neighborhood News



Crestwood Civic Club

Volume 9, Issue 1

Message from the President

The Spring neighborhood meeting is coming up as mentioned below.

PLEASE NOTE THE CHANGE IN LOCATION!!

We are continuing our Constable Patrol in 2011 with two officers providing continuous coverage from early morning through late evening.

Please give attention to the Livable Centers Study article on page 4. The results of the study will not have much near-term impact on the neighborhood, but the long-term implication could be profound.

See you at the meeting!

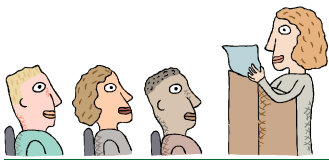
Mike VanDusen

In this issue:

Neighborhood Meeting	1
Playgroup	2
Board Information	2
Art Festival	2
2010 Fall Block Party	3
Livable Centers Study	4
Blockheads	4
Neighborhood History	5



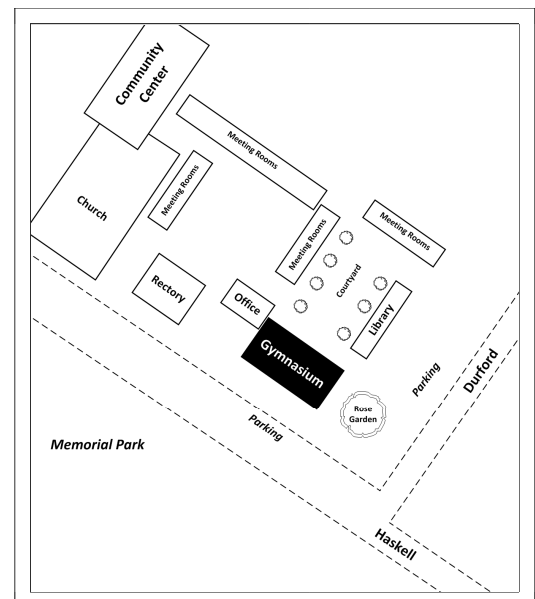
All-Neighborhood Meeting is April 5th



The next All-Neighborhood Meeting will be held at St. Theresa's Catholic Church at 7PM on Tuesday, April 5. Note that the

meeting will **NOT** be held in the Community Center as normally the case, but in the **Gymnasium**. It seems the Community Center was reserved last year!

The Gymnasium is on the corner of Haskell and Durford, and the best parking is at the lots near Memorial Park and on Durford. Signs will be posted by the cafeteria and Haskell parking lot, directing residents to the Gymnasium.



Neighborhood

We live in a wonderful neighborhood full of families raising young children. However, we all have such busy lives that it is sometimes difficult to get to know those who live so close to us. If you are interested in meeting oth-

er families with young children, please check out the recently formed neighborhood playgroup at



Playgroup

www.meetup.com/Crestwood-Glencove-Playgroup/. It's a great way to find playmates for your children and new friends for you.

Civic Club Board is Changing

Many thanks to outgoing board members Lisa Cooper, Brent Larsen, and Rebecca Marvil for the time and energy they have given to the neighborhood.

Mary Christ, longtime board member and treasurer, has also decided to step down. Her contribution will be sorely missed!

New board members include longtime residents Diana Musslewhite and Rita Chavez, as well as Pete Pavluk and Lon Stern.

Volunteer!

The board is looking for an additional member to handle security issues. Please contact the President below if you are interested!

Art Festival

The Bayou City Art Festival will be held Friday thru Sunday, March 25-27.



While the festival is held at Memorial Park, there is no public parking at the Park for the event.

In the past, this means that some Festival goers will park in our neighborhood during the day. ***Be prepared!***

Board Members

President	Mike VanDusen	(713)864-0221	president@crestwoodglencove.org
Former President	Brent Larsen		info@crestwoodglencove.org
Treasurer	Rita Chavez		treasurer@crestwoodglencove.org
Secretary	Scott Nelson	(713)269-2619	secretary@crestwoodglencove.org
Board Member	Diana Musslewhite	(713)864-7405	board3@crestwoodglencove.org
Board Member	Lon Stern		board2@crestwoodglencove.org
Newsletter/General Info	Susi Knight	(713)494-0372	communications@crestwoodglencove.org
Security Board Member	<Open>		security@crestwoodglencove.org
Architecture Committee Liaisons	Bill Owens Susanna Nelson	(713)861-0995	architecture@crestwoodglencove.org

2010 Neighborhood Block Party

We had yet more fabulous weather for the annual Crestwood / Glen Cove Block Party, which was held on Sunday, October 24, 2010. Children, adults and dogs alike enjoyed the opportunity to play, mingle, and meet new acquaintances (canine in the case of dogs).

Randy Marshall, returned again this year to serenade us.



The desserts and additional side dishes were wonderful this year; thanks to all who contributed (even though the party this year preceded Halloween, so we couldn't use it as the opportunity to rid ourselves of leftover candy...).



It does, indeed, take a neighborhood to hold a block party. Andre Crispin stopped by with a generous donation of Belgian beer, bringing a bit of his native homeland to Houston.



Special thanks to Mary Christ of Greenwood King for providing the entertainment, children's activities, food, and drinks. Once again Terrace Drive neighbors all pitched in: Mike and Sharon Speck, Randy and Cheryl Sorrels, and Steve Trautwein all helped. Thanks everyone; see you next fall!

Washington Corridor Livable Centers Study

Earlier this year, Mayor Annise Parker asked the Houston-Galveston Area Council to commission a Livable Centers Study of the Washington Avenue corridor. The goal of this study will be to identify improvements that create neighborhoods that are compact and mixed use, designed to be walkable, connected and accessible within the corridor. The study is currently in the funding phase, and is expected to become active this summer with completion projected in early 2012.



The mayor has expressed an interest in using the study results as a guideline for updating City ordinances addressing transportation, parking, building per-

mitting, and noise abatement. Current ordinances are considered inadequate in addressing the high-density development being forecasted for urban Houston through 2035.

Because our neighborhood is at the western edge of the study area, we may not be directly impacted by the forecasted high density building activities. We are more likely to be indirectly impacted, because we are located between the area forecasted for increased population density and an area where those people will want to go—Memorial Park.

We will likely see a steady increase in pedestrian, bicycle, and auto traffic in our neighborhood. Since the study is transportation oriented, recommendations may include new bike paths, mass transit rights-of-way, and pedestrian walkways.

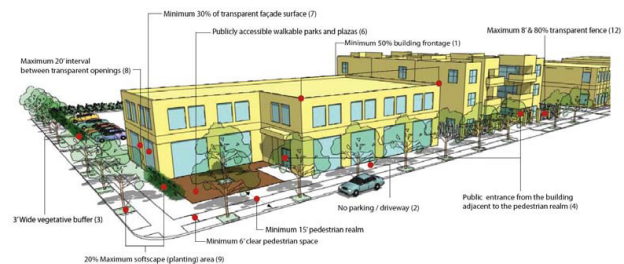
Background

The Houston-Galveston Area Council is a 13-county regional planning commis-



sion through which local governments cooperatively consider issues of growth in the Houston area. The focus of the council is transportation and air quality, community and environmental, and security and public safety.

The H-GAC has conducted several Livable Centers studies that targeted different areas of Houston.



For more information, please go to their website:

<http://www.h-gac.com>

<http://www.h-gac.com/community/livable/centers>

Blockheads

Street	Blockhead
Arnot, Byway, Haskell	Joan Hughes
Blossom	Ellen Lapointe
Camelia	Sharon Choens
Crestwood, NOM	Marilyn Ho
Crestwood, SOM	Joni Landon
East Cowan, NOB	Cherrill Farnsworth
East Cowan, SOB	JoAnn Owens
Feagan	Anne Coles
Floyd	Ofelia Vujasinovic
Glencove	Katy Emde
Glenwood	Minnette Carrabba
Memorial	Lenny Handy
Rose	Ofelia Mayo
Terrace, NOB	Susanna Nelson
Terrace, SOB	Mary Christ
West Cowan	Rebecca Marvil

The Neighborhood — circa 1922

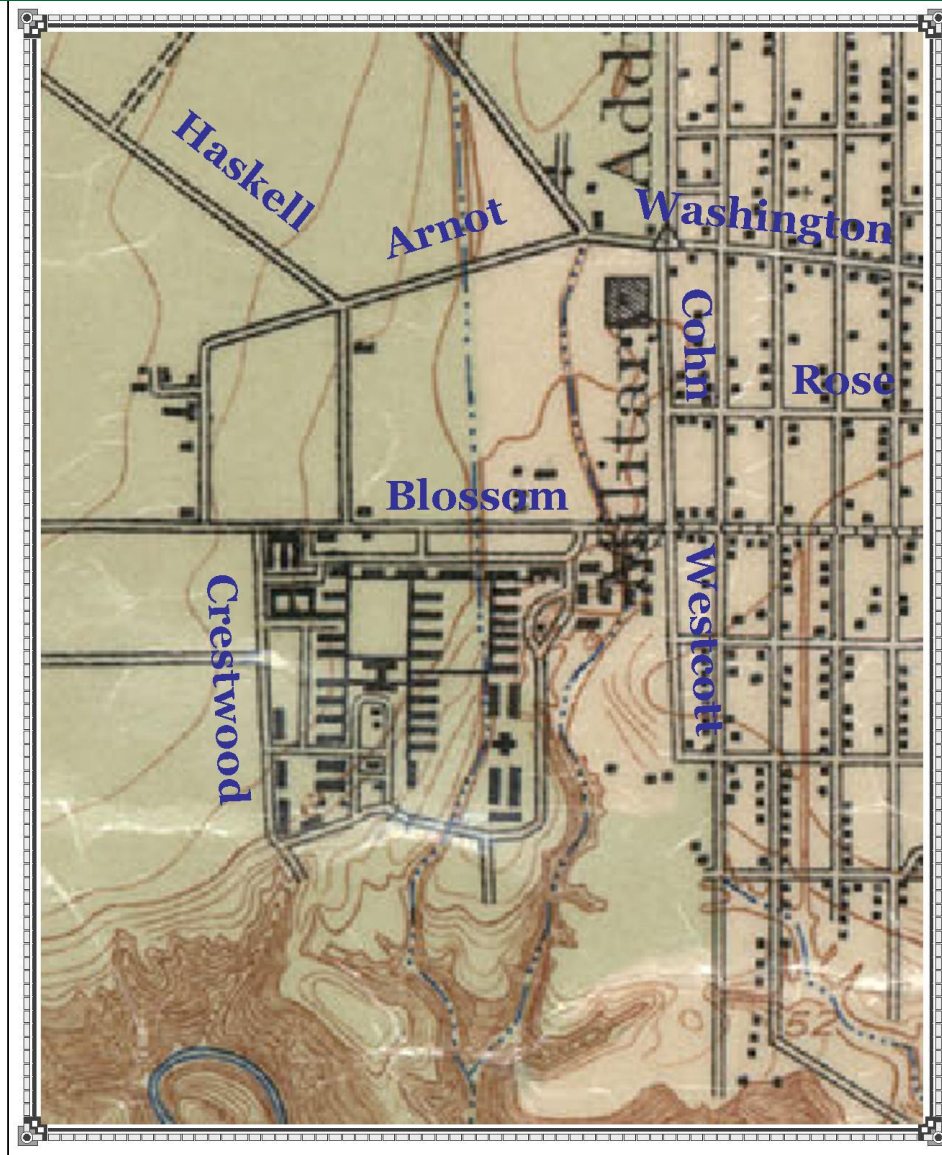
This map shows the neighborhood after Camp Logan was closed and before land was acquired by the City for Memorial Park. The land had been reacquired by Michael and William Hogg in 1919 when the camp was closed. Present day street names are superimposed onto the topographic map, courtesy of the University of Texas.

The black block on the southwest corner of Washington and Cohn was a pumping station. The function of the structures south of Blossom are not clear, but are presumed to be a US Public Health facility built after the camp closed.

When the camp was operational, the main entrance was located at the corner of Washington and Arnot and another entrance was on Blossom at the end of a streetcar line at Cohn. Corrals were located between the pumping station and Blossom, where Camellia and Rose are today.

A YMCA was built at the southeast corner of Haskell and Arnot, where Memorial Elementary school is located. At the southwest corner was located the Division Headquarters building for the camp.

The camp hospital facilities were located in the 300 blocks of Crestwood and W Cowan.



On the north side of the road parallel to Blossom (to the south) were located the officers quarters. These extended about 1/4 mile

west of Crestwood to East Loop Drive in Memorial Park. This road can be seen today as a path through the woods across from 218/222 Crestwood.



Camp Infirmary

Note the ravines draining the neighborhood into Buffalo Bayou. These can be seen today as functional storm swales, and dictate the paths of Terrace and Glenwood streets.

Crestwood Civic Club

P.O. Box 131594

Houston, Tx 77219-1594

Email: info@crestwoodglencove.org

www.crestwoodglencove.org

Happy, Healthy and Wholesome

